

# Gregory Development Road – Belyando Crossing to CHARTERS Towers

## Cape River bridge – wide load restriction (over 3.5 metres)

The Department of Transport and Main Roads (TMR) would like to advise wide loads (over 3.5 metres) will **not be permitted** to travel across Cape River bridge on the Gregory Developmental Road while essential maintenance works are undertaken. There are no restrictions to regulation width vehicles.

**Cape River bridge at Llanarth will be restricted to vehicles under 3.5m wide only on**

**Friday 11 November, 8am –  
4pm and**

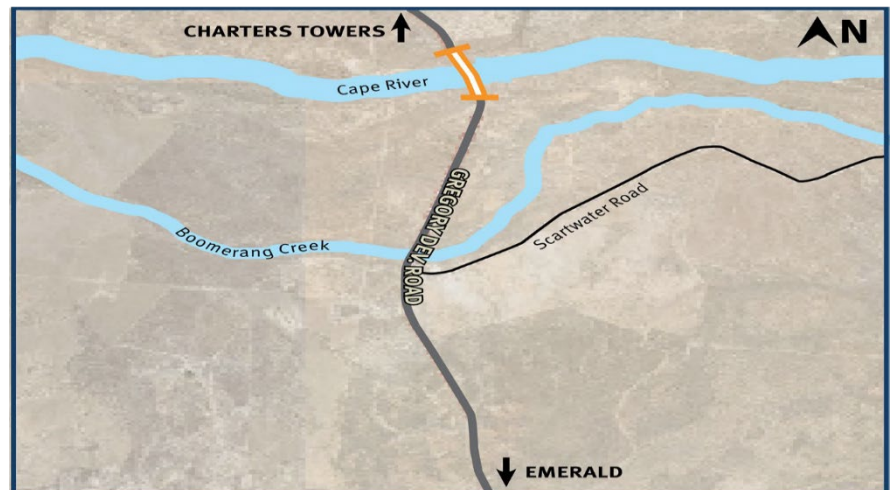
**Monday 14 November 2022, 8am – 4pm**

*All dates subject to construction progress and weather conditions*

**TMR emergency contact during these works: 0418 743 227**

### Works activities

- The works are part of scour protection repair works to the Cape River bridge.
- Traffic control crews will be onsite.
- For safety reasons, wide loads will not be permitted to travel over the bridge during the works and should arrange alternative dates and times of travel.



TMR would like to thank motorists for their patience and understanding during these important works.

### Stay informed

For more information, contact the Department of Transport and Main Roads' Customer and Stakeholder Management team in Townsville:

Phone: 1800 625 648

Email: [engagement.northern@tmr.qld.gov.au](mailto:engagement.northern@tmr.qld.gov.au)

Website: [www.tmr.qld.gov.au](http://www.tmr.qld.gov.au)

QldTraffic: Pre-plan your trip with QldTraffic and avoid delays. Visit: [qldtraffic.qld.gov.au](http://qldtraffic.qld.gov.au)

\*Free call from anywhere in Australia. Call charges apply for calls from mobile phones and payphones. Check with your service provider for call costs